

2023 Melges 24
World Championship

Go+Sail
Movement at sea





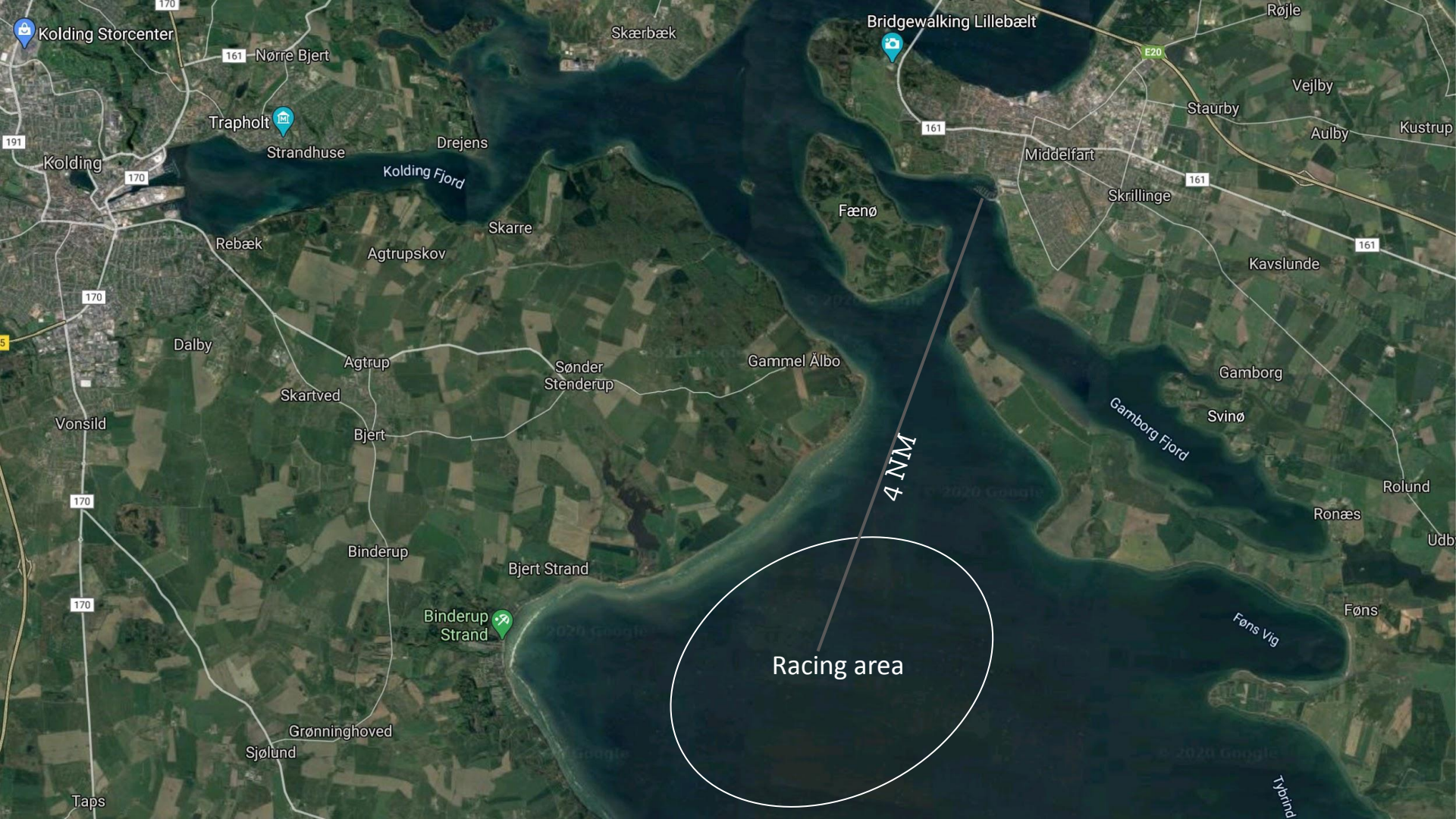
Regatta logo



Regatta website:

<https://gosail.dk/2023-melges-24-world-championship/>







ORGANIZING AUTHORITY

GoSail



MELGES 24
INTERNATIONAL MELGES 24 CLASS ASSOCIATION



SPORT EVENT
DENMARK

**DANSK
SEJLUNION**

Middelfart
KOMMUNE

Fyn
SØRØEN OG VEST

Saturday June 24th

Check-in, Registration and Measurement and Crew Weight-in
Hours: 9 a.m. to 1 p.m. | 2 p.m. to 6 p.m.

Race Village open for crews from 8 a.m. to 6 p.m.

Sunday June 25th

Check-in, Registration and Measurement and Crew Weight-in
Hours: 9 a.m. to 1 p.m. | 2 p.m. to 6 p.m.

Race Village open for crews from 8 a.m. to 6 p.m.

Monday June 26th

Check-in, Registration and Measurement and Crew Weight-in
Hours: 9 a.m. to 1 p.m. | 2 p.m. to 6 p.m.
Practice Race at 2 p.m.
All Boats afloat at 6 p.m.
Opening Ceremony, Hindsgavl Castle at 7 p.m.
Race Village open for crews from 8 a.m. to 6 p.m.

Tuesday June 27th

Competitors Briefing at 10:00 a.m.
Races at 12:00 a.m.
Daily Prizes at the end of races Race Village open
for crews from 8 a.m. to 6 p.m.

Wednesday June 28th

Competitors Briefing tbd
Races tbd
Daily Prizes at the end of races
Race Village open for crews from 8 a.m. to 6 p.m.

Thursday June 29th

Competitors Briefing tbd
Races tbd
Daily Prizes at the end of races
Championship Sailors' Dinner at 7 p.m.
Race Village open for crews from 8 a.m. to 6 p.m.

Friday June 30th

Competitors Briefing tbd
Races tbd
Daily Prizes at the end of races
Race Village open for crews from 8 a.m. to 6 p.m.

Saturday July 1st

Competitors Briefing tbd
Races tbd
Prize Giving Closing Ceremony , at the end of races at GoSail
Race Village open for crews from 8 a.m. to 6 p.m.
Haul out and Departure

PROGRAM

GoSail
Movement at sea



Officials:

Melges 24 Worlds	24. juni - 1. juli	Status:
Raceofficer 1	David Bartol IRO, SLO	Accept via Piret.
Raceofficer 2	Christian Lerke IRO, DK	Accept SL
Jury chairman	Howard Elliot IJ, IU AUS	Accept pr. mail
Jury 1	Arto Kiiski IJ, FIN	Accept pr. mail
Jury 2	Bruce Cook IJ/IU US	Accept pr. mail
Jury 3	Christina Örtendahl IJ/IU SWE	Avaits
Jury 4	Martin Clasen IU/IJ, GER	Accept pr. mail
Jury 5	Torben Precht-Jensen IU/IJ	Accept pr. mail
Jury 6	Russel Green IU, NZE	Avaits

Event photographer Mick Anderson DK, same person as in 2015

Hotels in the area





Hindsgavl Castle is located at the western tip of Funen. The castle is a modern hotel and conference centre with a historic heritage dating back to the 18th century – spread across the classical main building, the thoroughly renovated castle barn and the old breeding buildings, which have now been turned into hotel rooms, function and meeting rooms in a modern and stylish, raw design.

Distance to the Marina:

By car: 8 min. / 4,6 km

By foot: 45 min. / 3,7 km

[The hotel website](#)

175 EUR per person

(includes a 3-course menu, set by the head chef, accommodation and breakfast buffet)

[Hotel booking](#)



Milling Hotel Park is located near Middelfart train station, right in the lively city centre and not far from the waterfront and nature on Funen's west coast. The beautiful building from 1916 once served as a hospital and is now a 3-star hotel.

By car: 3 min. / 1,6 km

By foot: 20 min. / 1,6 km

[The hotel website](#)

110 EUR per single room

130 EUR per double room

includes accommodation and breakfast buffet

[Hotel booking](#)



Comwell Kongebrogaarden is a cosy luxury hotel, right down to Lillebælt on Funen – an idyllic stay at the waterfront surrounded by the forest.

Distance to the Marina:

By car: 8 min. / 5,1 km

By foot: 41 min. / 3,2 km

[The hotel website](#)

226 EUR per single room

253 EUR per double room

Accommodation and breakfast buffet

[Hotel booking](#)



HUSET Middelfart is located near scenic surroundings and all rooms have direct access to green areas. Breakfast is enjoyed in the restaurant with a direct view of Hindsgavl Animal Park. At HUSET you can choose between 4 types of rooms, which include both single and double rooms.

Distance to the Marina:

By car: 6 min. / 3,6 km

By foot: 36 min. / 2,8 km

[The hotel website](#)

DKK per single room

DKK per double room

includes accommodation and breakfast buffet

[Hotel booking](#)



Comwell Hotel Middelfart is located with a stunning view of Lillebælt. The hotel is close to the forest and the beach and here you will find a warm and welcoming atmosphere.

Distance to the Marina:

By car: 8 min. / 4,5 km

By foot: 46 min. / 3,8 km

[The hotel website](#)

From 120 EUR per single room

From 133 EUR per double room

includes accommodation and large breakfast buffet with organic and local specialties

[Hotel booking](#)

Screenshot from booking site

Link to booking site:

<https://gosail.dk/accomodation-melges24/>

Contact



CEO and Event Chairman

Søren M. Laugesen

SL@GoSail.dk

+45 2649 7913